



**AMERICAN SPECIALTIES, INC.**

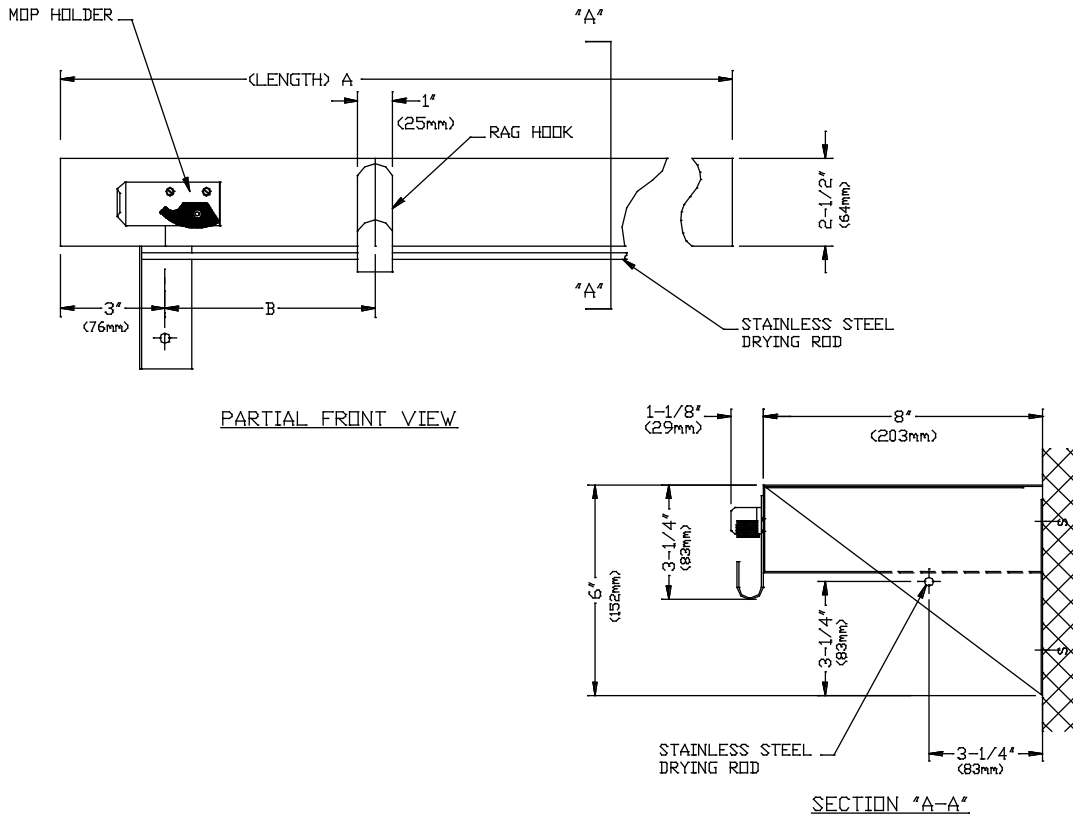
441 Saw Mill River Road, Yonkers, NY 10701 (914) 476-9000

MODEL No: 1315

ISSUED: 1-87

REVISED: 7-99

**UTILITY SHELF WITH MOP HOLDERS, DRYING ROD AND RAG HOOKS**



**SPECIFICATION**

Utility Shelf with Mop Holders, Drying Rod and Rag Hooks shall be fabricated of alloy 18-8 stainless steel, type 304. Utility shelf shall have 2-1/2" wide hemmed-in edge all around and shall be No. 18 gauge and length shall be as per schedule below. Rubber-cam mop-holders shall be provided in quantity listed in schedule at the face of shelf. A 3/8" dia. stainless steel rod shall be provided to run between the mounting bracket gussets. Mounting brackets shall be №16 gauge. All exposed surfaces shall be №4 satin finish and be protected during shipment with a PVC film easily removable after installation.

SCHEDULE				
Model №	A	B	Mop Holder Quantity	Rag Hook Quantity
1315-3	30" (762mm)	6" (152 mm)	3	2
1315-4	36" (914 mm)	5" (127 mm)	4	3
1315-6	48" (1219 mm)	4-3/16" (106 mm)	6	5

Utility Shelf with Mop Holders, Drying Rod and Rag Hooks shall be Model № 1315-\_\_\_ (insert size code) fabricated by American Specialties, Inc., 441 Saw Mill River Road Yonkers, New York 10701- 4913

**INSTALLATION**

Unit is surface mounted on wall or partition having clear wall space to floor using №10 self tapping screws (supplied). For compliance with ADA Accessibility Guidelines unit should be installed so that top of shelf is 48" (1219mm) maximum above finished floor (AFF) and 32" ( 813mm) minimum AFF. Typical installation for general utility is 72" (1879mm) above finished floor to top of shelf.

Accessory Specialties

AMERICAN DISPENSER

Desert Ray Products

WATROUS INC.